

Lincoln Elem School
Johnston City CUSD 1
Pittsburg, ILLINOIS



ILLINOIS
SCHOOL
REPORT
CARD

GRADES : K 1 2 3 4

State and federal laws require public school districts to release report cards to the public each year.

Starting in 2009, charter school information is included in district statistics.

STUDENTS

RACIAL/ETHNIC BACKGROUND AND OTHER INFORMATION

	White	Black	Hispanic	Asian/ Pacific Islander	Native American	Multi racial /Ethnic	Percent Low- Income	Percent Limited- English- Proficient	Percent IEP	High Sch. Dropout Rate	Chronic Truancy Rate	Mobility Rate	Attendance Rate	Total Enrollment
School	98.1	0.0	0.0	0.0	0.0	1.9	55.1	0.0	15.9		0.9	27.4	92.5	107
District	97.5	0.3	0.7	0.0	0.2	1.4	54.6	0.0	17.1		3.2	14.1	93.5	1,182
State	52.8	18.8	21.1	4.2	0.2	2.9	45.4	7.6	13.1		3.6	13.0	93.9	2,064,312

Low-income students come from families receiving public aid; live in institutions for neglected or delinquent children; are supported in foster homes with public funds; or are eligible to receive free or reduced-price lunches.

IEP Students are those students eligible to receive special education services.

Limited-English-proficient students are those students eligible for transitional bilingual programs.

Mobility rate is based on the number of times students enroll in or leave a school during the school year.

Chronic truants are students who are absent from school without valid cause for 18 or more of the last 180 school days.

INSTRUCTIONAL SETTING

PARENTAL CONTACT*		STUDENT-TO-STAFF RATIOS			
	Percent	Pupil- Teacher Elementary	Pupil- Teacher Secondary	Pupil- Certified Staff	Pupil- Administrator
School	98.5	--	--	--	--
District	97.1	20.8	18.2	17.1	168.9
State	96.2	18.2	18.2	13.3	203.8

* Parental contact includes parent-teacher conferences, parental visits to school, school visits to home, telephone conversations, and written correspondence.

AVERAGE CLASS SIZE (as of the first school day in May)

Grades	K	1	2	3	4	5	6	7	8	9 - 12
School	26.0	16.0	25.0	18.0	19.0					
District	25.8	19.5	25.8	21.0	20.3					
State	20.7	21.2	21.4	22.1	22.6					

TIME DEVOTED TO TEACHING CORE SUBJECTS (Minutes Per Day)

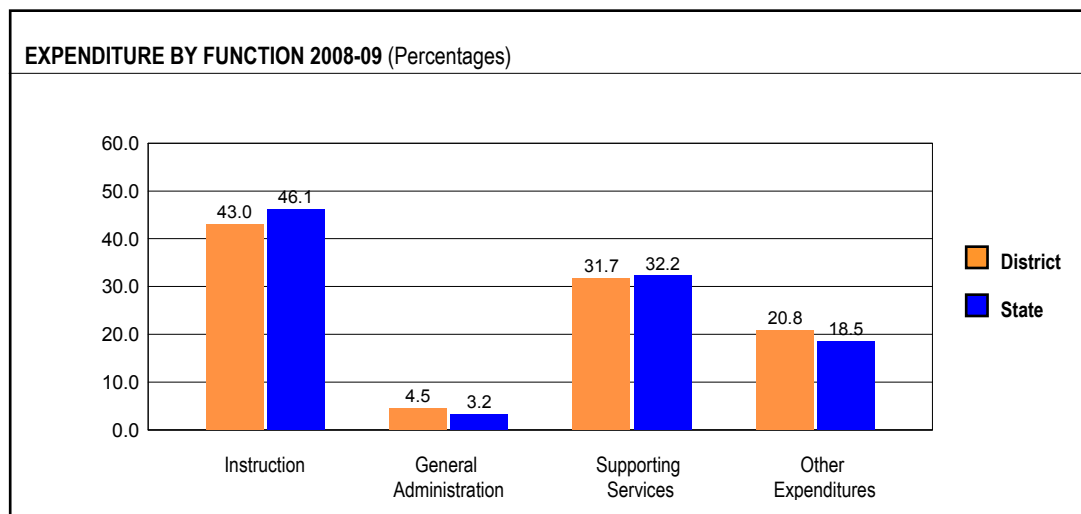
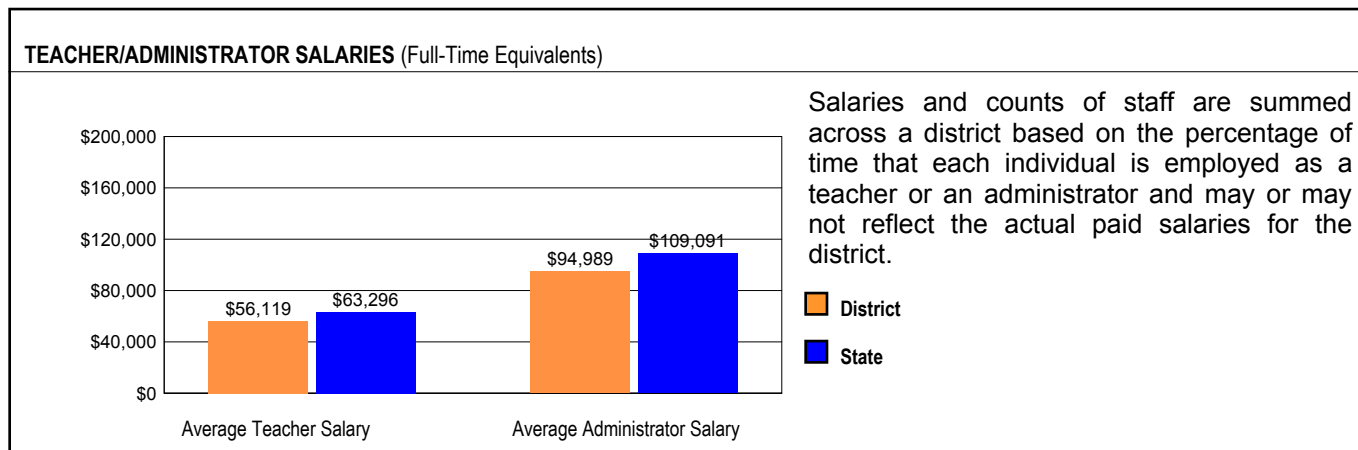
Grades	Mathematics			Science			English/Language Arts			Social Science		
	3	6	8	3	6	8	3	6	8	3	6	8
School	55			30			150			30		
District	51			37			137			37		
State	59			30			145			30		

TEACHER INFORMATION (Full-Time Equivalents)								
	White	Black	Hispanic	Asian/ Pacific Islander	Native American	Male	Female	Total Number
District	100.0	0.0	0.0	0.0	0.0	20.3	79.7	59
State	85.2	8.1	5.2	1.4	0.2	23.0	77.0	132,502

TEACHER INFORMATION (Continued)					
	Average Teaching Experience (Years)	% of Teachers with Bachelor's Degrees	% of Teachers with Master's & Above	% of Teachers with Emergency or Provisional Credentials	% of Classes Not Taught by Highly Qualified Teachers
School	--	--	--	0.0	0.0
District	14.3	61.1	38.9	0.0	0.0
State	12.7	42.2	57.4	0.5	0.7

Some teacher/administrator data are not collected at the school level.

SCHOOL DISTRICT FINANCES



REVENUE BY SOURCE 2008-09				EXPENDITURE BY FUND 2008-09			
	District	District %	State %		District	District %	State %
Local Property Taxes	\$2,765,662	24.9	58.4	Education	\$8,144,680	79.4	69.6
Other Local Funding	\$1,303,391	11.7	6.9	Operations & Maintenance	\$399,588	3.9	7.9
General State Aid	\$4,332,214	39.0	14.5	Transportation	\$453,221	4.4	3.8
Other State Funding	\$674,077	6.1	8.3	Debt Service	\$757,052	7.4	7.0
Federal Funding	\$2,025,831	18.2	11.9	Tort	\$187,838	1.8	1.2
TOTAL	\$11,101,175			Municipal Retirement/ Social Security	\$201,319	2.0	1.8
				Fire Prevention & Safety	\$22,924	0.2	0.8
				Site & Construction/ Capital Improvement	\$93,577	0.9	7.9
				TOTAL	\$10,260,199		

OTHER FINANCIAL INDICATORS				
	2007 Equalized Assessed Valuation per Pupil	2007 Total School Tax Rate per \$100	2008-09 Instructional Expenditure per Pupil	2008-09 Operating Expenditure per Pupil
District	\$62,468	3.53	\$4,446	\$8,264
State	**	**	\$6,483	\$11,197

** Due to the way Illinois school districts are configured, state averages for equalized assessed valuation per pupil and total school tax rate per \$100 are not provided.

Equalized assessed valuation includes all computed property values upon which a district's local tax rate is calculated.

Total school tax rate is a district's total tax rate as it appears on local property tax bills.

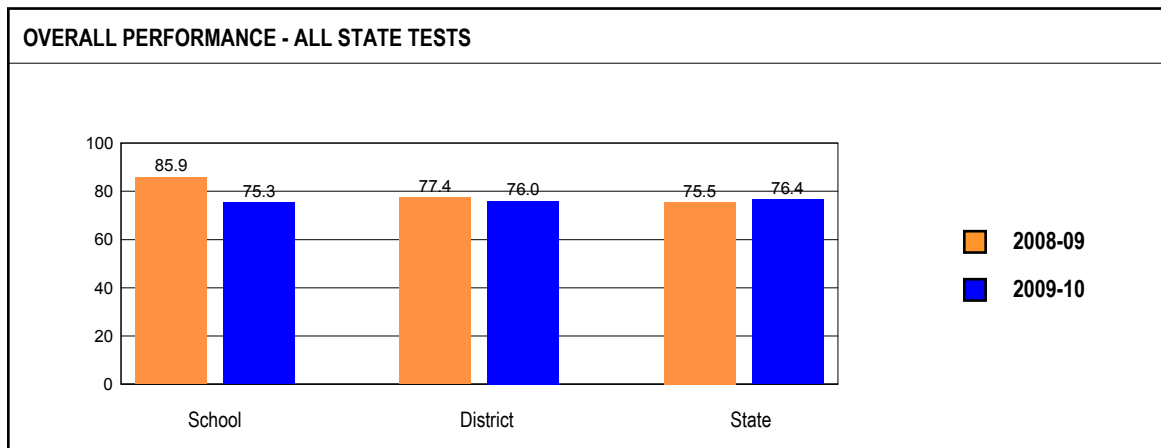
Instructional expenditure per pupil includes the direct costs of teaching pupils or the interaction between teachers and pupils.

Operating expenditure per pupil includes the gross operating cost of a school district excluding summer school, adult education, bond principal retired, and capital expenditures.

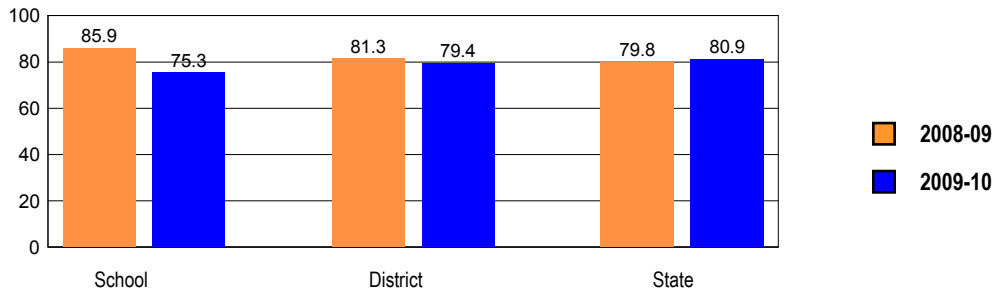
ACADEMIC PERFORMANCE

OVERALL STUDENT PERFORMANCE

These charts present the overall percentages of state test scores categorized as meeting or exceeding the Illinois Learning Standards for your school, district, and the state. They represent your school's performance in reading, mathematics, and science.

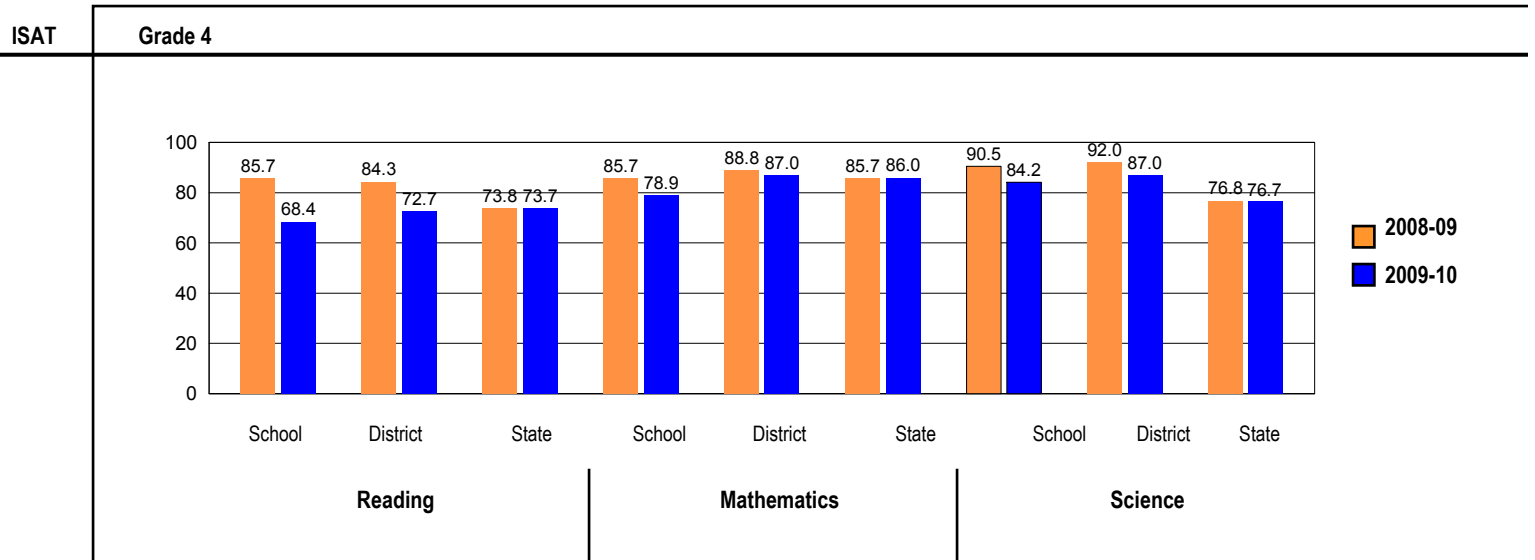
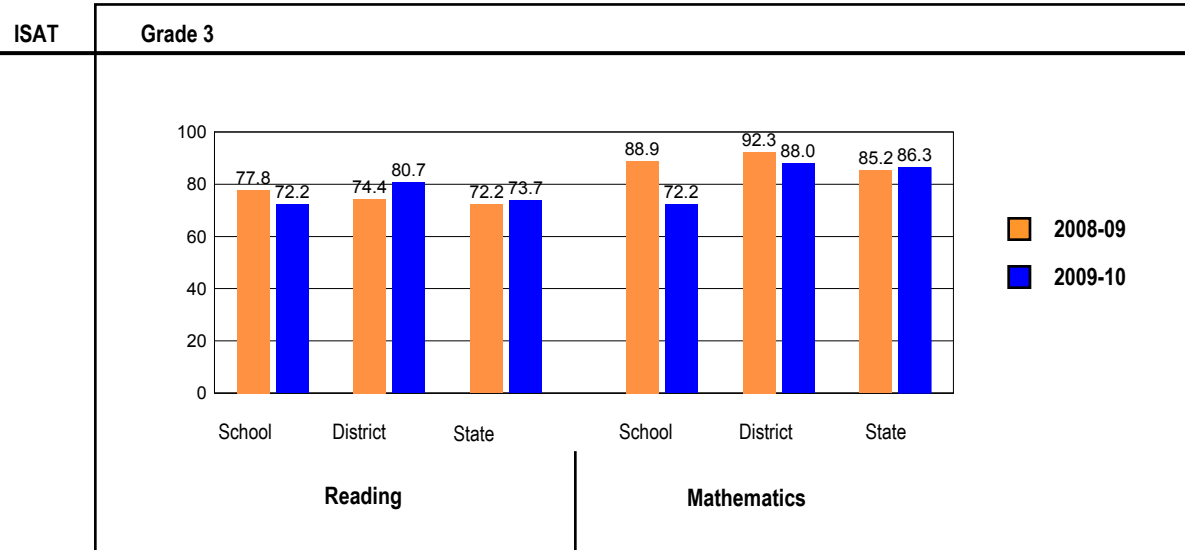


OVERALL ILLINOIS STANDARDS ACHIEVEMENT TEST (ISAT) PERFORMANCE



ISAT PERFORMANCE

These charts provide information on attainment of the Illinois Learning Standards. They show the percents of student scores meeting or exceeding Standards for the grades and subjects tested on ISAT.



PERFORMANCE ON STATE ASSESSMENTS

Federal law requires that student achievement results for reading, mathematics, and science for schools providing Title I services be reported to the general public.

The Illinois Standards Achievement Test (ISAT) is administered to students in grades 3 through 8. The Prairie State Achievement Examination (PSAE) is administered to students in grade 11. The Illinois Alternate Assessment (IAA) is administered to students with disabilities whose Individualized Education Programs (IEPs) indicate that participation in the ISAT or PSAE would not be appropriate.

Students with disabilities have an IEP (No Child Left Behind Act). An IEP is a written plan for a child with a disability who is eligible to receive special education services under the Individuals with Disabilities Education Act.

Reading and Mathematics are tested in grades 3 through 8 and 11. Science is tested in grades 4, 7, and 11.

In order to protect students' identities, test data for groups of fewer than ten students are not reported.

PERCENTAGE OF STUDENTS NOT TESTED IN STATE TESTING PROGRAMS FOR READING AND MATHEMATICS														
		Gender			Racial/Ethnic Background						LEP	Migrant	Students with Disabilities	Economically Disadvantaged
		All	Male	Female	White	Black	Hispanic	Asian/Pacific Islander	Native American	Multi racial /Ethnic				
School	*Enrollment	37	14	23	36	0	0	0	0	1	0	0	11	23
	Reading Mathematics	0.0 0.0	0.0 0.0	0.0 0.0	0.0 0.0								0.0 0.0	0.0 0.0
District	*Enrollment	584	290	294	570	0	4	0	3	7	0	0	145	333
	Reading Mathematics	0.2 0.2	0.3 0.3	0.0 0.0	0.2 0.2								0.0 0.0	0.3 0.3
State	*Enrollment	1,068,202	545,784	522,252	565,375	199,071	219,899	44,975	2,039	36,134	67,911	346	150,721	503,002
	Reading Mathematics	0.2 0.2	0.3 0.3	0.2 0.2	0.1 0.1	0.5 0.5	0.2 0.2	0.2 0.2	0.2 0.2	0.2 0.2	0.3 0.3	0.9 0.9	0.5 0.5	0.3 0.3

* Enrollment as reported during the testing windows for grades 3 - 8 and 11.

PERCENTAGE OF STUDENTS NOT TESTED IN STATE TESTING PROGRAMS FOR SCIENCE ONLY														
		Gender			Racial/Ethnic Background						LEP	Migrant	Students with Disabilities	Economically Disadvantaged
		All	Male	Female	White	Black	Hispanic	Asian/Pacific Islander	Native American	Multi racial /Ethnic				
School	*Enrollment	19	7	12	19	0	0	0	0	0	0	0	5	12
	Science	0.0		0.0	0.0									0.0
District	*Enrollment	228	118	110	222	0	2	0	0	4	0	0	61	137
	Science	0.4	0.8	0.0	0.5								0.0	0.7
State	*Enrollment	449,149	228,523	220,563	244,235	81,931	88,351	19,309	898	14,165	23,830	105	62,715	201,259
	Science	0.4	0.5	0.3	0.2	1.0	0.5	0.3	0.4	0.3	0.5	1.9	0.9	0.6

* Enrollment as reported during the testing windows for grades 4, 7, and 11.

ILLINOIS STANDARDS ACHIEVEMENT TEST (ISAT)

The following tables show the percentages of student scores in each of four performance levels. These levels were established with the help of Illinois educators who teach the grade levels and learning areas tested. Due to rounding, the sum of the percentages in the four performance levels may not always equal 100.

- Level 1 -- Academic Warning - Student work demonstrates limited knowledge and skills in the subject. Because of major gaps in learning, students apply knowledge and skills ineffectively.
- Level 2 -- Below Standards - Student work demonstrates basic knowledge and skills in the subject. However, because of gaps in learning, students apply knowledge and skills in limited ways.
- Level 3 -- Meets Standards - Student work demonstrates proficient knowledge and skills in the subject. Students effectively apply knowledge and skills to solve problems.
- Level 4 -- Exceeds Standards - Student work demonstrates advanced knowledge and skills in the subject. Students creatively apply knowledge and skills to solve problems and evaluate the results.

Grade 3**Grade 3 - All**

Levels	Reading				Mathematics			
	1	2	3	4	1	2	3	4
School	22.2	5.6	44.4	27.8	5.6	22.2	33.3	38.9
District	7.2	12.0	60.2	20.5	1.2	10.8	57.8	30.1
State	5.4	20.9	45.9	27.8	2.9	10.7	44.7	41.7

Grade 3 - Gender

Levels	Reading				Mathematics			
	1	2	3	4	1	2	3	4
Male								
School								
District	7.1	16.7	71.4	4.8	0.0	7.1	69.0	23.8
State	6.6	22.7	45.6	25.1	3.1	10.6	43.2	43.0
Female								
School	18.2	9.1	36.4	36.4	9.1	27.3	18.2	45.5
District	7.3	7.3	48.8	36.6	2.4	14.6	46.3	36.6
State	4.1	19.1	46.2	30.7	2.7	10.9	46.2	40.2

Grade 3 - Racial/Ethnic Background

Levels	Reading				Mathematics				
	1	2	3	4	1	2	3	4	
White	School	23.5	5.9	41.2	29.4	5.9	23.5	29.4	41.2
	District	7.4	12.3	60.5	19.8	1.2	11.1	58.0	29.6
	State	2.2	11.9	46.6	39.3	1.0	5.3	39.0	54.7
Black	School								
	District								
	State	9.8	31.1	46.2	12.9	7.4	20.0	51.9	20.6
Hispanic	School								
	District								
	State	9.7	35.1	44.2	11.0	4.1	16.7	54.3	24.9
Asian/Pacific Islander	School								
	District								
	State	1.7	10.0	43.5	44.9	0.9	3.5	27.3	68.4
Native American	School								
	District								
	State	3.8	19.8	48.3	28.1	2.3	8.0	46.8	43.0
Multiracial/Ethnic	School								
	District								
	State	3.7	17.3	48.2	30.7	2.1	9.0	45.8	43.1

Grade 3 - Economically Disadvantaged

Levels	Reading				Mathematics				
	1	2	3	4	1	2	3	4	
Free/Reduced Price Lunch	School	36.4	9.1	36.4	18.2	9.1	36.4	27.3	27.3
	District	13.0	17.4	56.5	13.0	2.2	17.4	63.0	17.4
	State	9.0	30.9	46.4	13.7	5.0	16.8	52.7	25.5
Not Eligible	School								
	District	0.0	5.4	64.9	29.7	0.0	2.7	51.4	45.9
	State	1.6	10.4	45.3	42.7	0.8	4.3	36.2	58.7

Grade 4**Grade 4 - All**

Levels	Reading				Mathematics				Science			
	1	2	3	4	1	2	3	4	1	2	3	4
School	5.3	26.3	31.6	36.8	0.0	21.1	63.2	15.8	0.0	15.8	63.2	21.1
District	1.3	26.0	48.1	24.7	0.0	13.0	64.9	22.1	1.3	11.7	67.5	19.5
State	1.2	25.1	44.8	28.9	1.1	12.9	57.7	28.2	2.8	20.5	59.6	17.0

Grade 4 - Gender

Levels	Reading				Mathematics				Science				
	1	2	3	4	1	2	3	4	1	2	3	4	
Male	School												
	District	0.0	35.9	43.6	20.5	0.0	15.4	66.7	17.9	2.6	12.8	64.1	20.5
	State	1.7	27.7	43.9	26.7	1.3	13.3	56.1	29.3	3.2	20.1	57.4	19.4
Female	School	8.3	8.3	33.3	50.0	0.0	16.7	58.3	25.0	0.0	8.3	66.7	25.0
	District	2.6	15.8	52.6	28.9	0.0	10.5	63.2	26.3	0.0	10.5	71.1	18.4
	State	0.7	22.3	45.7	31.2	0.9	12.5	59.5	27.1	2.5	21.0	62.0	14.6

Grade 4 - Racial/Ethnic Background

Levels	Reading				Mathematics				Science				
	1	2	3	4	1	2	3	4	1	2	3	4	
White	School	5.3	26.3	31.6	36.8	0.0	21.1	63.2	15.8	0.0	15.8	63.2	21.1
	District	1.3	26.3	48.7	23.7	0.0	13.2	65.8	21.1	1.3	11.8	67.1	19.7
	State	0.5	15.1	45.0	39.4	0.5	6.6	54.4	38.5	0.8	10.2	63.7	25.4
Black	School												
	District												
	State	2.3	40.9	44.4	12.4	2.7	25.7	61.3	10.3	7.2	39.9	49.2	3.7
Hispanic	School												
	District												
	State	2.1	38.8	45.3	13.9	1.5	18.7	65.5	14.2	4.5	31.2	58.6	5.7
Asian/Pacific Islander	School												
	District												
	State	0.4	10.7	39.6	49.2	0.5	4.2	41.2	54.1	1.3	9.1	57.7	31.9
Native American	School												
	District												
	State	0.7	21.7	44.9	32.6	0.4	13.0	59.8	26.8	3.3	17.4	58.7	20.7
Multiracial/Ethnic	School												
	District												
	State	0.5	21.0	47.2	31.2	0.6	11.4	59.9	28.0	1.7	17.2	63.0	18.1

Grade 4 - Economically Disadvantaged

Levels	Reading				Mathematics				Science				
	1	2	3	4	1	2	3	4	1	2	3	4	
Free/Reduced Price Lunch	School	0.0	33.3	41.7	25.0	0.0	16.7	75.0	8.3	0.0	8.3	66.7	25.0
	District	0.0	35.3	49.0	15.7	0.0	15.7	72.5	11.8	2.0	13.7	70.6	13.7
	State	2.1	37.9	45.7	14.2	1.9	20.4	63.9	13.8	5.0	32.3	56.6	6.2
Not Eligible	School												
	District												
	State	3.8	7.7	46.2	42.3	0.0	7.7	50.0	42.3	0.0	7.7	61.5	30.8

2010 ADEQUATE YEARLY PROGRESS (AYP) Status Report

Is this school making Adequate Yearly Progress (AYP)?	Yes
Is this school making AYP in Reading?	Yes
Is this school making AYP in Mathematics?	Yes

Has this school been identified for School Improvement according to the AYP specifications of the federal No Child Left Behind Act?	No
2010-11 Federal Improvement Status	
2010-11 State Improvement Status	

	Percent Tested on State Tests				Percent Meeting/Exceeding Standards *						Other Indicators			
	Reading		Mathematics		Reading			Mathematics			Attendance Rate		Graduation Rate	
	%	Met AYP	%	Met AYP	%	Safe Harbor Target **	Met AYP	%	Safe Harbor Target **	Met AYP	%	Met AYP	%	Met AYP
State AYP Minimum Target	95.0		95.0		77.5			77.5			91.0		80.0	
All	100.0	Yes	100.0	Yes	73.1		Yes	84.6		Yes	92.5	Yes		
White														
Black														
Hispanic														
Asian/Pacific Islander														
Native American														
Multiracial /Ethnic														
LEP														
Students with Disabilities														
Economically Disadvantaged														

Four Conditions Are Required For Making Adequate Yearly Progress (AYP):

1. At least 95% tested in reading and mathematics for every student group. If the current year participation rate is less than 95%, this condition may be met if the average of the current and preceding year rates is at least 95%, or if the average of the current and two preceding years is at least 95%. Only actual participation rates are printed. If the participation rate printed is less than 95% and yet this school makes AYP, it means that the 95% condition was met by averaging.
2. At least 77.5% meeting/exceeding standards in reading and mathematics for every group. For any group with less than 77.5% meeting/exceeding standards, a 95% confidence interval was applied. Subgroups may meet this condition through Safe Harbor provisions. ***
3. At least 91% attendance rate for non-high schools and at least 80% graduation rate for high schools.

* Includes only students enrolled as of 05/01/2009.

** Safe Harbor Targets of 77.5% or above are not printed.

*** Subgroups with fewer than 45 students are not reported. Safe Harbor only applies to subgroups of 45 or more. In order for Safe Harbor to apply, a subgroup must decrease by 10% the percentage of scores that did not meet state standards from the previous year plus meet the other indicators (attendance rate for non-high schools and graduation rate for high schools) for the subgroup. For subgroups that do not meet their Safe Harbor Targets, a 75% confidence interval is applied. Safe Harbor allows schools an alternate method to meet subgroup minimum targets on achievement.

The faculty and administration met to discuss and analyze students' test scores on the Illinois Standards Achievement Test. The results and analysis of the 2009-2010 ISAT for Lincoln Elementary School are as follows:

3rd Grade – Tested in Reading and Math

72.2% of our 3rd grade students met or exceeded state standards in Reading.
72.2% of our 3rd grade students met or exceeded state standards in Math.

4th Grade – Tested in Reading, Math, and Science

68.4% of our 4th grade students met or exceeded state standards in Reading.
78.9% of our 4th grade students met or exceeded state standards in Math.
84.2% of our 4th grade students met or exceeded state standards in Science.

Overall, we are pleased with our students' performance on the 2009-2010 ISAT tests. While we are delighted with most of our scores, we also have some areas of concern. **We are very proud that our students met or exceeded state standards in Math and Reading.** We believe with a concentrated effort among faculty and administration we can continue to improve in these areas. We impress upon each of our students that there is always room for improvement. To help maintain and strengthen our overall commitment to make certain that the students at Lincoln Elementary School meet or exceed state standards, we will make certain that our staff targets and continues to align our curriculum to the Illinois State Learning Standards. An extensive effort is being made by our administration and faculty to continue to improve reading scores in the district.

Other areas that we believe have enhanced a positive and productive learning environment are:

- Staff utilization of Heggerty Phonemic Awareness
- All classes are setting goals in Accelerated Reading
- Study Island ISAT preparation
- IXL Math
- ISAT training in Reading, Writing, and Math
- Progress Monitoring all students in the area of reading
- Purchased many new books for the library
- Students have access to a school counselor/implemented instruction in emotional
- Expanded the RtI/Aspire program for struggling readers
- SRA reading series in all classrooms, including special education
- Weekly assemblies that promote and reward positive behavior.
- Collaboration of regular and special education teachers
- CATCH PE
- District wide grade level meetings to discuss curriculum

Some areas of concern for the administration and faculty of Lincoln Elementary are:

- Explore Write-on Illinois for ISAT
- Updated technology and addition computers
- SmartBoards and projectors installed in each classroom for interactive instruction
- Elementary PE teacher/curriculum
- Additional books in library
- Title 1 Math Program
- Increase practice of basic math facts